

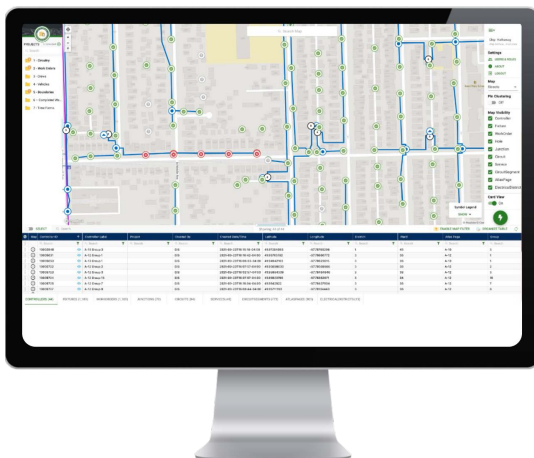
Work Smarter

Streetlight photocells and smart controllers help make your lights work smarter. The TerraGo Maintenance Module makes your people work smarter. If you want to transform your operations, reduce truck rolls, improve service levels and lower costs, you need the Maintenance Module.

The Maintenance Module helps bridge the gap from back-office systems to your field operations. This enables crews to identify and fix problems quickly and efficiently. When a light malfunctions, the TerraGo system automatically logs alerts, meter readings and failure reports about the problem. Combined with real-time diagnostics data, crews can follow step-by-step workflows that walk them directly from the root cause of the problem to the best solution.

REMOTE DIAGNOSTICS

When a streetlight is out, trucks are often rolled to the outage location without the tools or information they need to solve the problem. This often leads to more questions with no good answers. Is it a problem with the fixture? The network? The power supply? Sometimes they are simply working blind, so they will just replace everything, including the fixture, bulb and controller. This of course, wastes a great deal of money and time, especially if the failing component is the power supply. The Maintenance Module removes the guesswork which translates into less truck rolls, better customer service and lower O&M expenses.

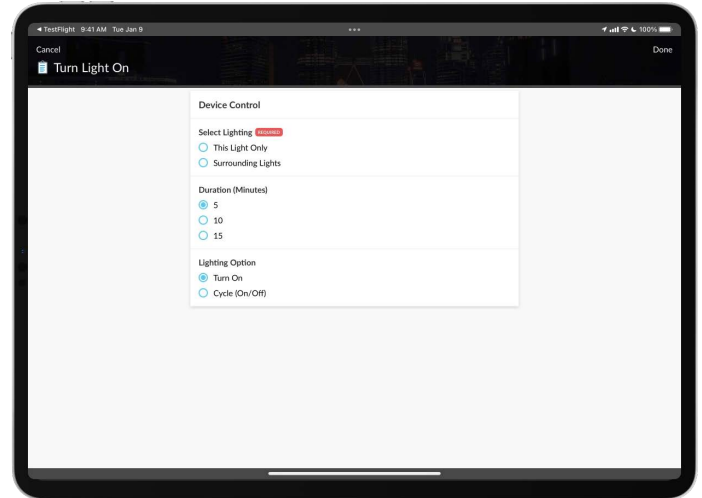


FEATURES

- Configure workflows for all tasks, outages, inspections, conversions, replacements and more
- View meter readings and outage status directly on the app
- Access failure reports (current and historical) from mobile devices
- Control in real-time, one or more lights from a phone or tablet
- Utilize step-by-step diagnostic workflows to solve issues correctly on the first visit & prevent re-rolling trucks

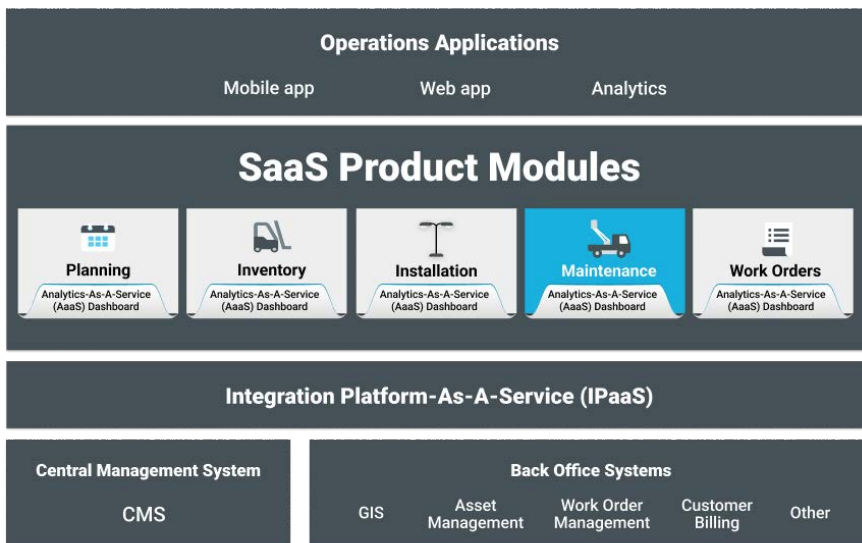
PUT CONTROL IN THE HANDS THAT NEED IT MOST

When it comes to outage restorations, one of the most powerful tools is the ability for crews to control lights and access real-time data from their phones or tablets. As an example, citizens report streetlight outages by specifying an address but the crew shows up and they don't know which specific light is out. Many times, the daytime crews will simply re-assign the ticket to a night patrol, which means spending more money to roll another truck, but with the Maintenance Module, crews can simply tap on the app and turn on a single light or multiple lights (e.g., all lights on this street, or within 1000 feet of my GPS location). This means they can identify the failure and get real-time meter readings and failure reports to solve the problem right, the first time.



ABOUT TERRAGO

With over 8 million streetlights under management and trusted by global leaders, including 9 of the 10 largest US utilities, Exelon, Dominion Energy, the City of Chicago, City of London, Glasgow, Jamaica Public Service and many more, TerraGo is the world's only software platform focused on streetlight operations. With unmatched domain expertise, TerraGo accelerates energy savings and lowers operations and maintenance costs by improving efficiency at every stage of the lifecycle, from planning and inventory to installation, maintenance and work orders.



BENEFITS

- Decreases repeat visits and reduces truck rolls
- Eliminates the unnecessary expensive removal and replacement of components
- Accelerates restoration tasks and improves employee productivity
- Lowers O&M costs, contractor budgets for night patrols and crews
- Improves customer service levels